

- Easy assembly, simple to use
- Brass fitting options also available upon request
- Vast collection of fittings to suit all tube sizes
- Adjustable bleed connectors available upon request



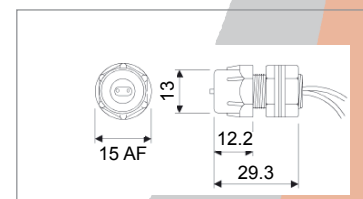
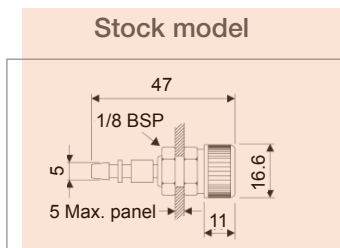
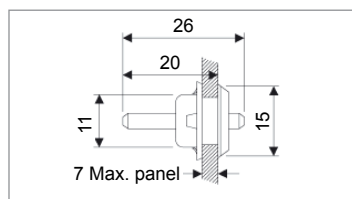
General specifications

Standards/ approvals	n/a	Contact configuration	n/a
Degree of protection	n/a	Operating temperature range	-10°C to +40°C
Connection method	see table	Body material	Brass, PVC, nylon, Polyurethane
Electrical rating	n/a	Weight	see table

Tubing options (reference dimensions)

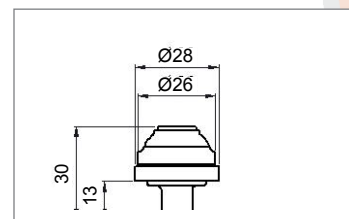
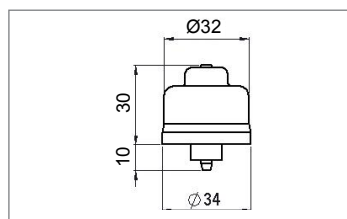
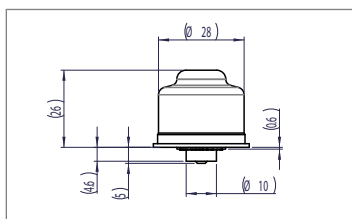
Tube type	Part No.	Material	Bore Ø mm	Outside Ø mm	For use with spout Ø	Application
Single tube	2311-01	Clear PVC	3.0	6.0	4.0	For connecting all air, vacuum and low pressure switches and airswitches
	2311-08	Black PVC	3.0	6.0	4.0	
	2311-03	Black polyurethane	1.5	3.2	2.1 - 2.5 mm to fit 4.0 mm spout use 3420-28	For microbore air systems
Twin tube	2311-09	Black PU	3/0	2x 6.0	4.0	For connecting all air, vacuum and low pressure switches and airswitches
Flat twin tube	2311-15	Grey polyurethane	1.5	n/a	2.1 - 2.5 mm to fit 4.0 mm spout use 3420-28	For use with all foot bellows and special versions of hand controls. Tubes can be split into single cores.
2.4m coiled twin tube (stretched)	2311-14	Grey polyurethane	1.5	n/a	2.1 - 2.5 mm to fit 4.0 mm spout use 3420-28	

Bulkhead connectors (reference dimensions)



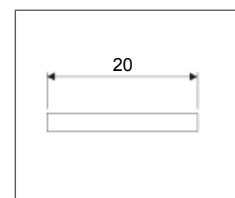
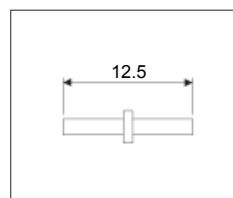
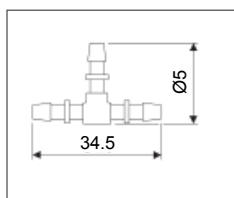
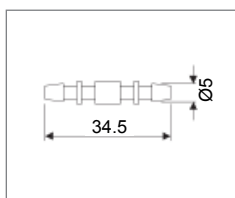
Model No.	6418-00	6419-00	6419-0010
Panel Thickness	1 to 7 mm	1 to 5 mm	0.5 to 4 mm
Cut-out Ø	11 mm	10 mm	13 mm
Spout Ø	IN: 4 mm OUT: 4 mm	4 mm & locking collar 5 mm fir tree nylon plastic	2 x 2.1 mm brass spout for twin tube with locking collar 2 x 1.5 mm bore polyurethane tube 150mm long
Material	Black nylon	Black nylon	Black nylon & PU
Fixing	Spire fix	Flange nut	Flange
Use	Low cost bulkhead connector 3 mm I/D tubes	Bulkhead connector with connecting tube lock for 3mm I/D tubes	Bulkhead connector for 1.5mm I/D twin tube

Internal bellows (reference dimensions)

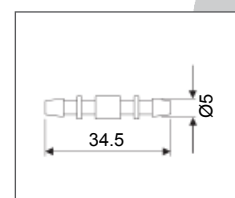
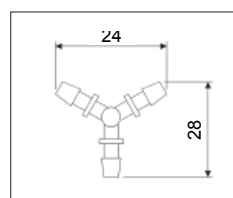
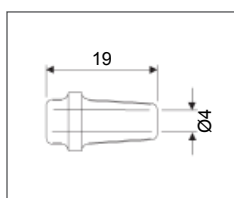
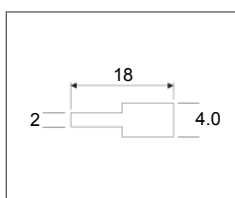


Model No.	6444-03	6444-04	6435-01
Material	PVC	PVC	Silicon
Spout size	4 mm	4 mm	2 mm

Connectors (reference dimensions)



Model No.	6420-00	6421-00	3612-04	3420-20
Material	Tranlucent nylon	Tranlucent nylon	Brass	Brass
Ø mm	5 mm	5 mm	2.1 mm	2.0 mm
For connecting tube with internal Ø	3 mm (2311-01 & 2311-08)	3 mm (2311-01 & 2311-08)	1.5 mm	1.5 mm



Model No.	3420-28	3321-07	6422-00	6422-0001
Material	Brass	Soft black PVC	Tranlucent Nylon	Tranlucent Nylon
Ø mm	4 mm to 2 mm	4 mm to 4 mm	5 mm	5 mm
For connecting tube with internal Ø	3 mm to 1.5 mm		3 mm (2311-01 & 2311-08)	3 mm (2311-01 & 2311-08)
Use	For reducing or increasing small to large bore tubing	in line reducer to connect from 4mm O/D PVC tube to 4 mm spout	Combining variations of inlet and outlet e.g. 1 bellows 2 airswitches	Pours bleed filter flow 0.1/0.4 Lt/Min @ 8.5 PSI air flow damper