

Coupling CPS37 (L=24, D1=06 / D2=06)

For encoder with solid shaft

Article number: 11069333

Overview

- Precision coupling
- Torsionally stiff coupling with low installation depth
- Pluggable
- Electrically insulating center disk
- Suitable for very high speeds



Technical data

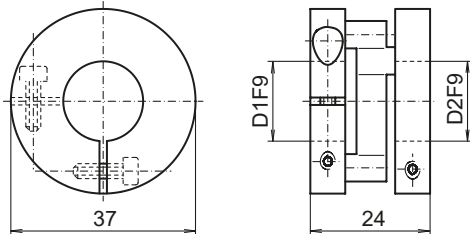
Technical data

Shaft diameter D1	6 mm
Shaft diameter D2	6 mm
Operating speed	≤13500 rpm
Operating temperature	-30...+80 °C
Moment of inertia	≤ 100 gcm ²
Maximum torque	300 Ncm

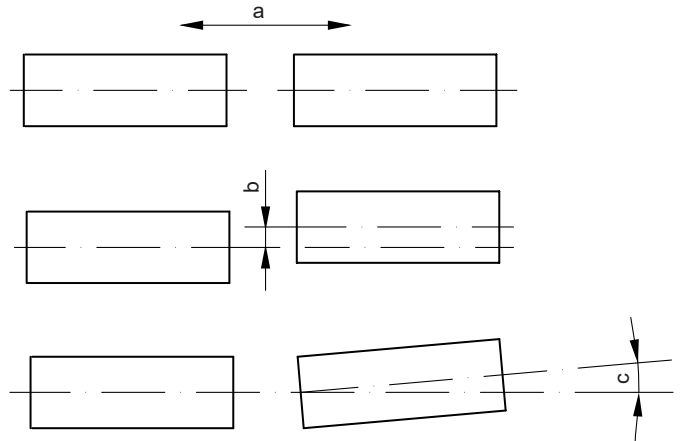
Technical data

Admissible parallel misalignment	≤ 1 mm
Admissible angular error	≤ 1 °
Weight approx.	42 g
Mechanical mounting	Clamping hub
Material	Hub: aluminium Centre disc: plastic

Dimensions



Assembly drawing



a = Admissible axial movement
b = Admissible parallel misalignment
c = Admissible angular error